

1968 *Lynx*



2427 FRONT ST.

CUYAHOGA FALLS, OHIO
Route 5

Phone: 928-2106

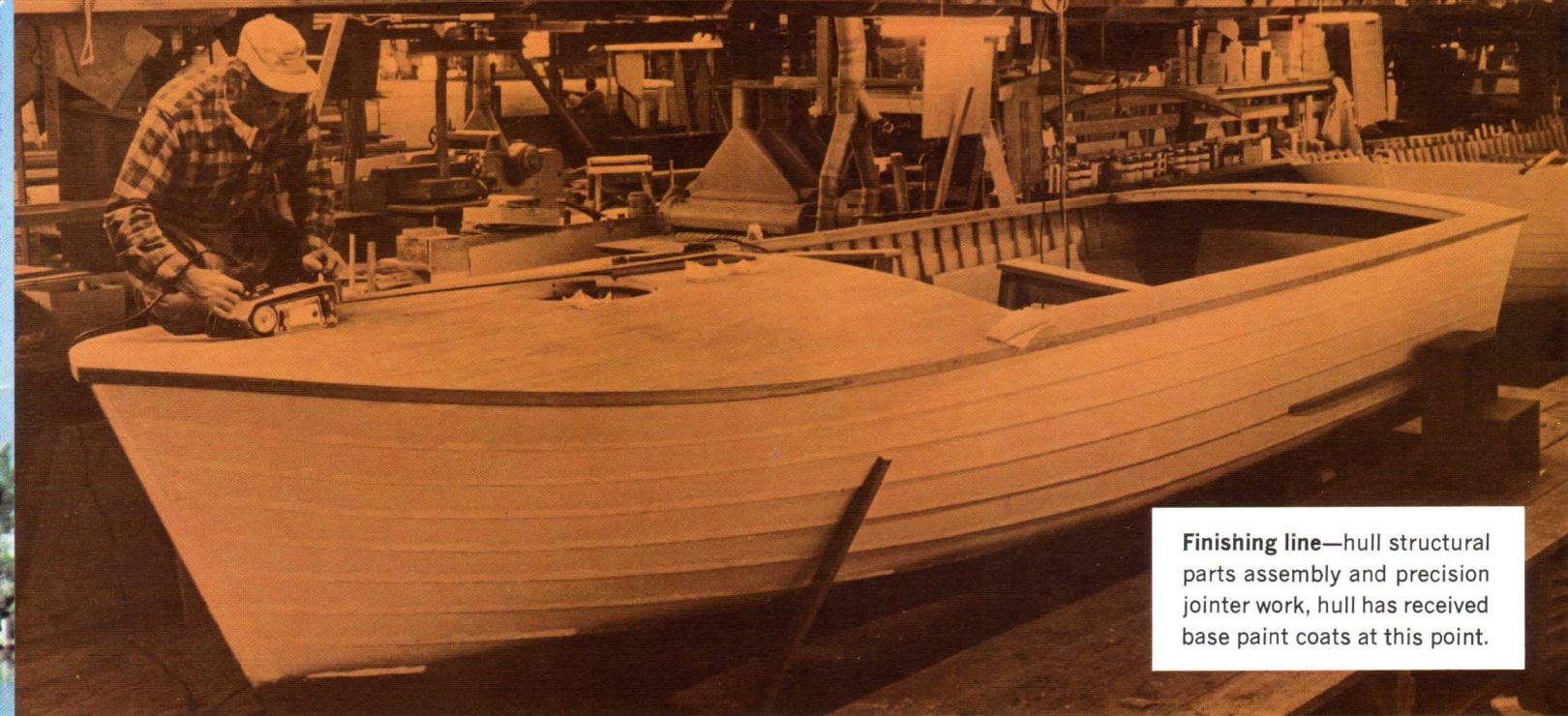
HIBBARD
MARINE

"QUALITY BOATS SINCE 1875"



OH 3265 HA

29 1/2' EXPRESS CRUISER



Finishing line—hull structural parts assembly and precision jointer work, hull has received base paint coats at this point.

LET'S LOOK AT THE RECORD

The latest market survey shows that the great majority of all conventional inboard power boats made today are built of wood. A visit to any large marina will confirm this fact. In the exceptions when other materials are used for hulls, the decks, trim and superstructure are invariably built of wood. There are very good reasons why the larger power boat builders and boat owners prefer nature's "miracle material," the first and still the best.

Here are some of the very important reasons — wood has great, natural strength, it will absorb tremendous strains because of natural resilience, and it has superb fatigue and impact resistance. Wood's natural warmth and beauty lend themselves to fine craftsmanship and wood is noted for its ease of repair and maintenance.

At Lyman, we use only the best of woods in our famous, full lapstrake hulls, decks and superstructures which means you get a stronger, better-looking boat, a drier boat and a quieter, easier riding boat . . . and that's what most knowledgeable boat owners are looking for.

R. E. Miller

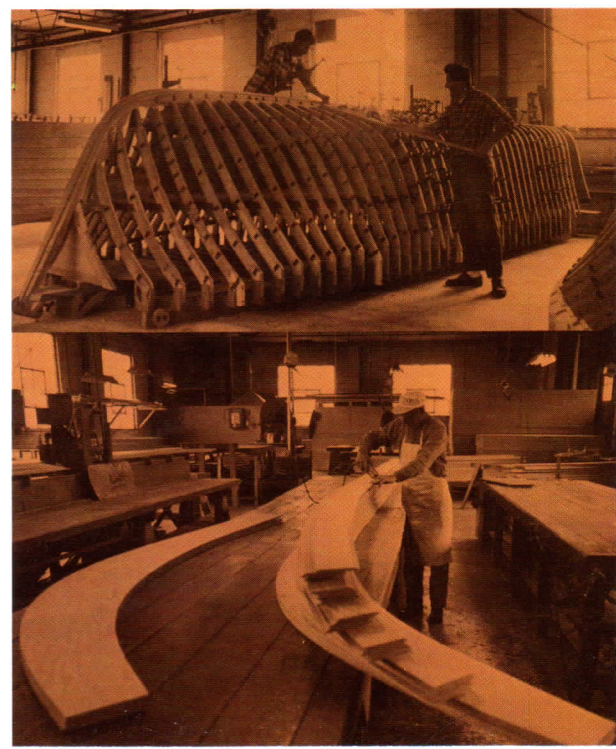
R. E. Miller
Vice President



Installation (left) — final assembly of bronze-chrome hardware, engine and components, electrical wiring and accessories. This is followed by final inspection and water testing.

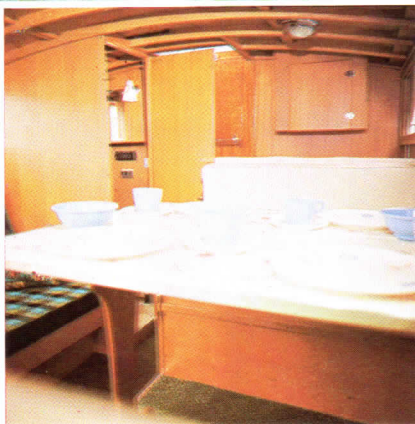
Planking (bottom right)—machining and shaping the 5-ply fir marine plywood planking for all hulls.

Hull mold (top right) — steam-forming of white oak ribs or frame to mold. Plank assembly to frames — keel-stem and transom follow this operation.



29'6" EXPRESS CRUISER

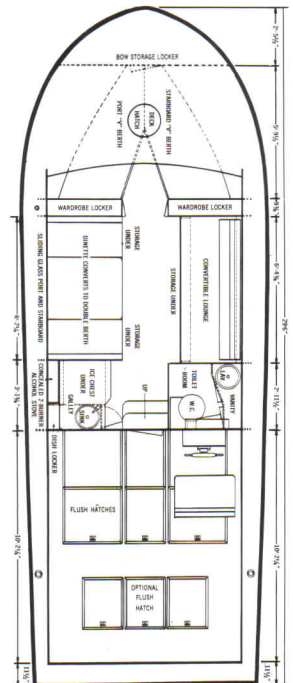
A beautiful, full-cabin boat that makes extended cruising a pleasure, with arrangements to sleep six, full height toilet room, generous galley and ample storage space. New luxurious designer interiors and Lyman's smart lines make this cruiser a thing of comfort and beauty to please the ladies. And . . . Lyman's famous full lapstrake construction, superb hull design . . . power and speed to please the man. Great seaworthiness assures the owner and guests safety and unusual comfort in any weather.



STANDARD EQUIPMENT

(SUBJECT TO CHANGE WITHOUT NOTICE)

Alcohol 2-Burner Stove, Concealed • 2 Bilge Blowers • Bilge Ventilating System • Bilge Drain Plug • Bow Chocks • Cabin Top, Vinyl Covered • Carpeting • Compartment Lights • Dinette with Cushions, Converts to Double Berth • Dish Locker • Dock Lines • Electric Signal Horn • 2 Fire Extinguishers • Fog Bell • Forward "V" Berths, with Mattresses • Forward Deck Hatch and Screen • Fresh Water System • Galley Storage Locker • Galley Cabinet • Handrails on Cabin Top • Handrail in Aft Cockpit with Nylon Weather Cloth • Helmsman Seat • International Navigation Lights • Lounge, Converts to Upper and Lower Berth • Philippine Mahogany Paneling • Mahogany Ship's Wheel • Medicine Cabinet • Mirror • Mooring Bitts • Nickel-Bronze Propellers • Pennant Pole and Lyman Pennant • Refrigerator (Electric Optional) • Shipping Cradle • Silverware Drawer • Sliding Side Windows, Safety Glass and Screens • Spring Line Cleats • Stainless Steel Galley Sink • Stainless Steel Gunwale and Bilge Bumper Banding • Stainless Steel Wash Basin • Stem Band • Step Pads • Stern Pole • Storage Drawers • Transom Scuff Banding • Toilet • Vanity • Ventilating Express Windshield with Sideshields, Safety Glass • Vinyl Floor Covering in Aft Cockpit • 2 Wardrobe Lockers • Windshield wiper.





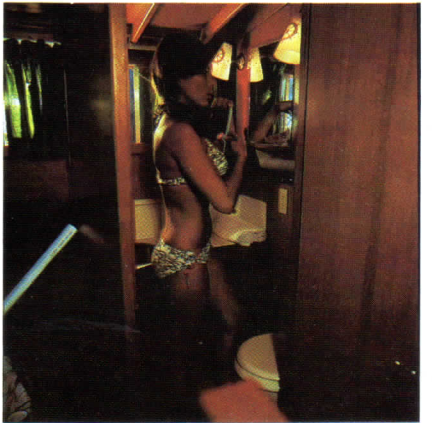
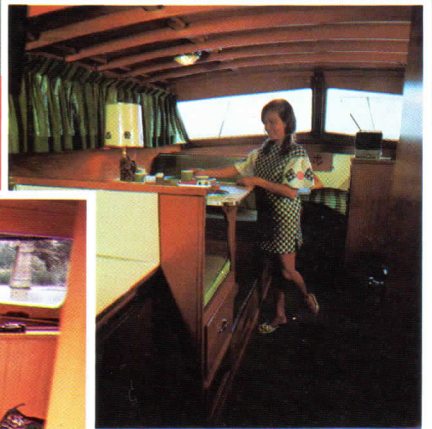
REAR VIEW OF 29½' EXPRESS CRUISER SHOWING SPACIOUS AFT COCKPIT



SPECIFICATIONS

(SUBJECT TO CHANGE WITHOUT NOTICE)

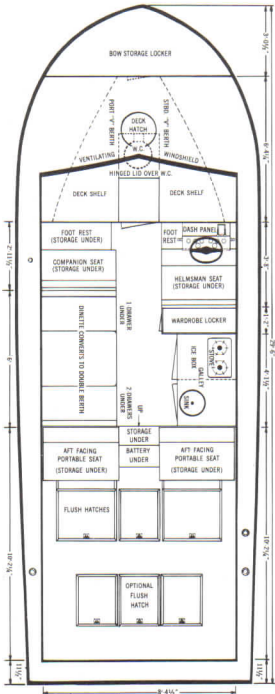
- Length O. A. (Centerline) 29'-6"
- Beam O. A. 10'-9"
- Draft 2'-7"
- Freeboard Forward 4'-1"
- Freeboard Aft 3'-5"
- Aft Cockpit Length 10'-6"
- Shipping Weight (Approx.) 7700#
- Headroom 6'-1"
- Hull, Clinker-built, Round Bottom Design; 5-Ply Fir Marine Plywood Throughout ½"
- Frames, Steam-bent White Oak Throughout 1 1/8" x 1 3/8" Spaced 7" Centers
- Keel, Stem, Knees and all other Structural Parts White Oak
- All Jointer Work Solid Philippine Mahogany and Philippine Mahogany Plywood.
- Fastenings —
Salt Water Fastened Throughout
- Berths 6
- Fuel Capacity, Gallons 104
- Fresh Water Capacity, Gallons 20
- Engine Options. Twin V-8's up to 250 HP
- Speeds (Attained over an accurately-measured course under favorable conditions, not guaranteed)....Over 35 MPH



COLORFUL NEW DESIGNER INTERIORS IN LYMAN EXPRESS CRUISER CABINS

29'6" ISLANDER

The ISLANDER was designed as a day cruiser . . . sleeps four comfortably. Cabin is glass enclosed on sides and features spacious helmsman and companion seats. There is generous galley space and ample storage lockers. The large, open flush aft cockpit is ideal for entertaining . . . two portable aft-facing lounge seats with individual storage are standard. The ISLANDER aft cockpit has ample room for two fishing chair installations making it an ideal boat for big game fishing. Fly bridge is optional.



Lyman



SPECIFICATIONS

(SUBJECT TO CHANGE WITHOUT NOTICE)

Length O. A. (Centerline)	29'-6"
Beam O. A.	10'-9"
Draft	2'-7"
Freeboard Forward	4'-1"
Freeboard Aft	3'-5"
Aft Cockpit Length	10'-7"
Shipping Weight (Approx.)	7700#
Headroom	6'-1"

Hull, Clinker-built, Round Bottom Design; 5-Ply Fir Marine Plywood Throughout 1/2"
 Frames, Steam-bent White Oak Through-out 1 1/8" x 1 3/8" Spaced 7" Centers
 Keel, Stem, Knees and all other Structural Parts White Oak
 All Joiner Work Solid Philippine Mahogany and Philippine Mahogany Plywood.

Fastenings —
 Salt Water Fastened Throughout
 Berths 4
 Fuel Capacity, Gallons 104
 Fresh Water Capacity, Gallons 20
 Engine Options Twin V-8's up to 250 HP
 Speeds (Attained over an accurately-measured course under favorable conditions, not guaranteed) Over 35 MPH

STANDARD EQUIPMENT

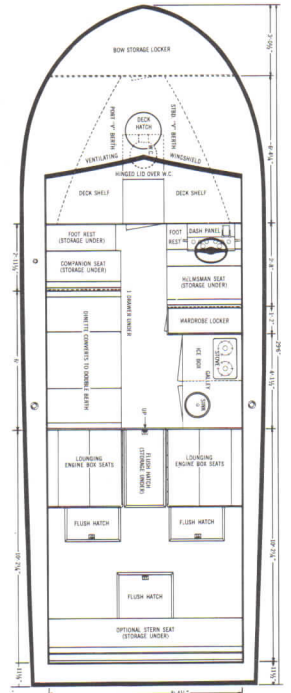
(SUBJECT TO CHANGE WITHOUT NOTICE)

Aft Cockpit Locker Seats, with Cushions and Backrest Pads • Alcohol 2-Burner Stove • Anchor Light • Back Rest Pads and Seat Cushions for Helmsman and Companion Seats • 2 Bilge Blowers • Bilge Ventilating System • Bilge Drain Plug • Bow Chocks • Cabin Top, Vinyl Covered • Compartment Lights • Dinette with Cushions, Converts to Double Berth • Dock Lines • Electric Signal Horn • 2 Fire Extinguishers • Fog Bell • Forward "V" Berths with Mattresses • Forward Deck Hatch and Screen • Fresh Water System • Galley Storage Locker • Handrails on Cabin Top • Handrail in Aft Cockpit with Nylon Weather Cloth • International Navigation Lights • Philippine Mahogany Paneling • Mooring Bitts • Nickel-Bronze Propellers • Pennant Pole and Lyman Pennant • Refrigerator (Electric Optional) • Shipping Cradle • Silverware Drawer • Sliding Side Windows, Safety Glass • Spring Line Cleats • Stainless Steel Galley Sink • Stainless Steel Gunwale and Bilge Bumper Banding • Stem Band • Step Pads • Stern Pole • Storage Drawers • Transom Scuff Banding • Toilet • Ventilating Windshield with Sideshields, Safety Glass • Vinyl Floor Covering Throughout • Wardrobe Locker • Windshield Wiper.



29'6" SPORTSMAN

The SPORTSMAN is one of the largest open boats available in the market today . . . a dozen people can be accommodated for fishing or fun very easily. There is a well-appointed galley and dinette and you can sleep four people easily, if the need arises. The twin engine boxes are upholstered and make ideal loafing or sunning spots. Standard are the wide helmsman and companion seats and the head in the forward compartment . . . aft cross seat is optional. If a spacious floating patio appeals to you, the SPORTSMAN is right down your alley.



SPECIFICATIONS

(SUBJECT TO CHANGE WITHOUT NOTICE)

Length O. A. (Centerline)	29'-6"
Beam O. A.	10'-9"
Draft	2'-7"
Freeboard Forward	4'-1"
Freeboard Aft	3'-5"
Aft Cockpit Length	10'-2½"
Shipping Weight (Approx.)	7400#

Hull, Clinker-built, Round Bottom Design; 5-Ply Fir Marine Plywood Throughout ½"

Frames, Steam-bent White Oak Throughout..... 1½" x 1⅜" Spaced 7" Centers

Keel, Stem, Knees and all other Structural Parts White Oak

All Joiner Work Solid Philippine Mahogany and Philippine Mahogany Plywood.

Fastenings —
Salt Water Fastened Throughout

Berths 4

Fuel Capacity, Gallons 104

Fresh Water Capacity, Gallons 20

Engine OptionsTwin V-8's up to 250 HP

Speeds (Attained over an accurately-measured course under favorable conditions, not guaranteed) Over 35 MPH



STANDARD EQUIPMENT

(SUBJECT TO CHANGE WITHOUT NOTICE)

Alcohol 2-Burner Stove • Anchor Light • Back Rest Pads and Seat Cushions for Helmsman and Companion Seats • 2 Bilge Blowers • Bilge Ventilating System • Bilge Drain Plug • Bow Chocks • Compartment Lights • Dinette with Cushions (Converts to double berth.) • Dock Lines • Electric Signal Horn • 2 Fire Extinguishers • Fog Bell • Forward "V" Berths with Mattresses • Forward Deck Hatch and Screen • Fresh Water System • Galley Storage Locker • International Navigation Lights • Philippine Mahogany Paneling • Mooring Bitts • Motor Box Cushions • Nickel-Bronze Propellers • Pennant Pole and Lyman Pennant • Refrigerator (Electric Optional) • Shipping Cradle • Silverware Drawer • Spring Line Cleats • Stainless Steel Galley Sink • Stainless Steel Gunwale and Bilge Bumper Banding • Stem Band • Step Pads • Stern Pole • Storage Drawer • Transom Scuff Banding • Toilet • Ventilating Windshield with Sideshields, Safety Glass • Vinyl Floor Covering Throughout • Wardrobe Locker • Windshield Wiper.

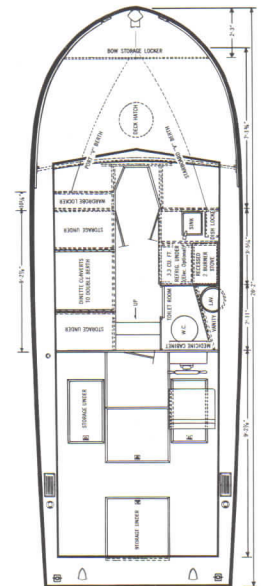
The New Lyman 26' EXPRESS CRUISER

This beautiful new full-cabin Lyman boat on our popular 26' hull is the answer to many requests for a single screw full lapstrake Express Cruiser in this size and at a moderate price. It has a full height toilet room, sleeps four, a generous galley space, roomy aft cockpit and generous storage space throughout the boat. It's the ideal family cruiser for either dockside living or extended trips . . . sleek and trim with a new low silhouette and, of course, all of the proved Lyman seaworthiness and quality.

STANDARD EQUIPMENT

(SUBJECT TO CHANGE WITHOUT NOTICE)

Bilge Ventilating System • Bilge Drain Plug • Bilge Blower • Bow Chocks • Cabin Top, Vinyl Covered • Carpeting • Compartment Lights • Dinette with Cushions (Converts to double berth) • Dish Locker • Dock Lines • Electric Signal Horn • Forward "V" Berths with Mattresses • Ventilating Forward Deck Hatch • Fresh Water System • Galley Storage Locker • Hand Rails on Cabin Top • Handrail in Aft Cockpit with Nylon Weather Cloth • Helmsman Seat • International Navigation Lights • Philippine Mahogany Paneling • Mahogany Steering Wheel • Medicine Cabinet • Mirror • Mooring Bitts • Nickel-bronze Propeller • Pennant Pole and Lyman Pennant • Refrigerator (Electric Optional) • Shipping Cradle • Sliding Side Windows, Safety Glass and Screens • Galley Sink • Stainless Steel Gunwale and Bilge Bumper Banding • Stainless Steel Wash Basin • Stem Band • Step Pads • Stern Pole • Storage Lockers • Stove, 2 Burner Alcohol (Recessed), Electric Optional • Transom Scuff Banding • Toilet • Vanity • Ventilating Express Windshield and Sideshields, Safety Glass • Vinyl Floor Covering in Aft Cockpit • 1 Wardrobe Locker.

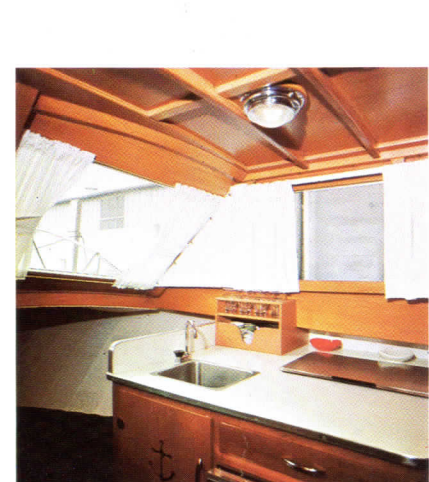


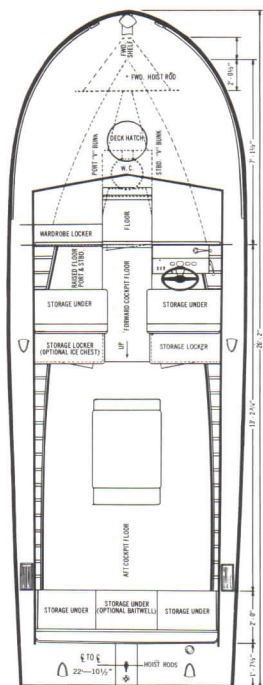
SPECIFICATIONS

(SUBJECT TO CHANGE WITHOUT NOTICE)

Length O. A (Centerline)26'2"
 Beam O. A.9'-1"
 Draft2'4"
 Freeboard Forward3'-9 1/2"
 Freeboard Aft2'-11 1/2"
 Aft Cockpit Length9'-3"
 Shipping Weight (Approx.)4000#
 Headroom6'-2"
 Hull Bottom, Clinker-built, Round Bottom Design; 5 Ply Marine Plywood1/2"
 Hull Sides, Clinker-built; 5 Ply Fir Marine Plywood3/8"
 Frames, Steam-bent White Oak Throughout7/8" x 1 1/8" Spaced 7" Centers

Keel, Stem, Knees and all other Structural PartsWhite Oak.
 All Jointer Work Solid Philippine Mahogany and Philippine Mahogany Plywood.
 Fastenings —
 Salt Water Fastened Throughout
 Berths4
 Fuel Capacity, Gallons60
 Fresh Water Capacity, Gallons20
 Engine Options....Single V-8's to 250 HP
 Speeds (Attained over an accurately-measured course under favorable conditions, not guaranteed)to 32 MPH





26' SLEEPER

A roomy, beamy boat, seaworthy, fast and soundly built in Lyman full lapstrake construction. Features are forward "V" berths and hanging clothes locker. There are many options in this model including toilet, interior paneling, bow railings, folding top with snap-on curtains, or permanent hard top with sliding glass windows . . . see price list for other optional equipment. It's another Lyman quality boat built with family pleasure in mind, fishing, water-skiing and vacation use and just enjoying the sun and the water.

STANDARD EQUIPMENT

(SUBJECT TO CHANGE WITHOUT NOTICE)

Bilge Drain Plug • Bilge Ventilating System • Bow Chocks • Compartment Lights • Nickel-Bronze Propeller • Dock Lines • Electric Signal Horn • Fore and Aft Lifting Rings • Forward "V" Berths with Mattresses • Forward Deck Hatch • Navigation Lights • Pennant Pole and Lyman Pennant • Shipping Cradle • Stainless Steel Gunwale and Bilge Bumper Banding • Stem Band • Step Pads • Stern Pole • Storage Lockers • Transom Scuff Banding • Ventilating Windshield with Sideshields, Safety Glass.



SPECIFICATIONS

(SUBJECT TO CHANGE WITHOUT NOTICE)

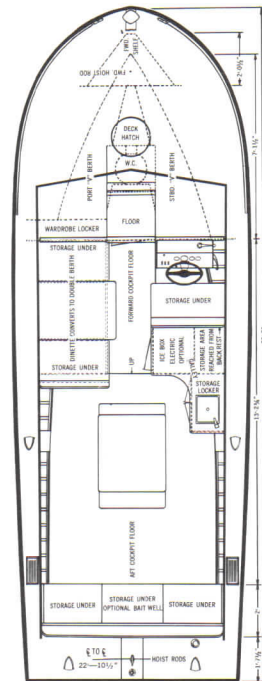
Length O. A. (Centerline)26'-2"
 Beam O. A.9'-1"
 Draft2'-4"
 Freeboard Forward3'-9 1/2"
 Freeboard Aft2'-11 1/2"
 Depth (Amidships, Floor to Rail)3'-2"
 Aft Cockpit Length9'-1"
 Shipping Weight (Approx.)3600#

Hull Bottom, Clinker-built, Round Bottom Design; 5-Ply Fir Marine Plywood..1/2"
 Hull Sides, Clinker-built; 5-Ply Fir Marine Plywood3/8"
 Frames, Steam-bent White Oak Throughout7/8" x 1 1/8" Spaced 7" Centers
 Keel, Stem, Knees and all other Structural PartsWhite Oak
 All Joiner Work Solid Philippine Mahog-

any and Philippine Mahogany Plywood. .
 Fastenings —
 Salt Water Fastened Throughout
 Fuel Capacity, Gallons50
 Berths, Sleeper2
 Engine Options, Single V-8's up to 250 HP
 Speeds (Attained over an accurately-measured course under favorable conditions, not guaranteed)to 33 MPH

26' CRUISETTE

We like a happy owner's description of the CRUISETTE as a "family fun boat" . . . it is that. It sleeps four with forward "V" berths and a dinette that converts into a double bunk . . . galley with refrigerator is standard. Optional extras include folding soft top or hard top with sliding glass windows, vinyl floor covering, interior paneling and toilet. It's a comfortable, roomy boat in the great Lyman tradition of safety and unusual seaworthiness. Full lapstrake construction in Lyman's fine dry-ride hull.



STANDARD EQUIPMENT

(SUBJECT TO CHANGE WITHOUT NOTICE)

Bilge Drain Plug • Bilge Ventilating System • Bow Chocks • Compartment Lights • Dinette (Converts to berth) • Nickel-Bronze Propeller • Dock Lines • Electric Signal Horn • Fresh Water System • Fore and Aft Lifting Rings • Forward "V" Berths with Mattresses • Forward Deck Hatch • Galley with Storage Lockers • Navigation Lights • Pennant Pole and Lyman Pennant • Refrigerator (Electric Optional) • Shipping Cradle • Silverware Drawer • Stainless Steel Gunwale and Bilge Bumper Banding • Stem Band • Step Pads • Stern Pole • Stainless Steel Galley Sink • Storage Lockers • Transom Scuff Banding • Ventilating Windshield with Sideshields, Safety Glass.

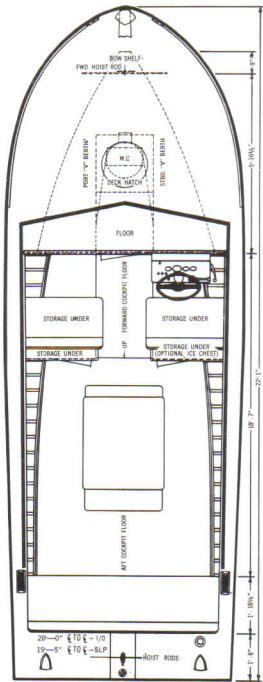
SPECIFICATIONS

(SUBJECT TO CHANGE WITHOUT NOTICE)

Length O. A. (Centerline)	26'-2"
Beam O. A.	9'-1"
Draft	2'-4"
Freeboard Forward	3'-9 1/2"
Freeboard Aft	2'-11 1/2"
Depth (Amidships, Floor to Rail)	3'-2"
Aft Cockpit Length	8'-5"
Shipping Weight (Approx.)	3700#
Hull Bottom, Clinker-built, Round Bottom Design; 5-Ply Fir	
Marine Plywood	1/2"
Hull Sides, Clinker-built; 5-Ply Fir Marine Plywood	3/8"
Frames, Steam-bent White Oak Throughout	7/8" x 1 1/8"
	Spaced 7" Centers
Keel, Stem, Knees and all other Structural Parts	White Oak
All Joiner Work Solid Philippine Mahogany and Philippine Mahogany Plywood.	
Fastenings	Salt Water Fastened Throughout
Berths	4
Fuel Capacity, Gallons	50
Engine Options	Single V-8's up to 250 HP
Fresh Water Capacity, Gallons	10
Speeds (Attained over an accurately measured course under favorable conditions and are not guaranteed.)	to 33 MPH

THE LYMAN 22 FOOTERS

If you've found your under-20 boat a little cramped for the family this 22' Lyman is an economical move up in size. You can have this big, comfortable boat with either standard inboard power or inboard-outboard drive. They feature convenient walk-through forward seats, lockers behind the seats and additional storage space under all seats and the forward "V" berths sleep two. High visibility, ventilating windshields with side shields (all safety glass) are standard and there are many options including toilet, interior paneling and either folding or hard tops.



STANDARD EQUIPMENT

(SUBJECT TO CHANGE WITHOUT NOTICE)

- Bilge Drain Plug • Bow Chocks • Compartment Lights • Dock Lines • Electric Signal Horn • Fore and Aft Lifting Rings • Forward "V" Berths with Mattresses • Forward Deck Hatch • Navigation Lights • Pennant Pole and Lyman Pennant • Shipping Cradle • Stainless Steel Gunwale and Bilge Bumper Banding • Stem Band • Step Pads • Stern Pole • Storage Lockers • Transom Scuff Banding • Ventilation System • Ventilating Windshield with Sideshields, Safety Glass.

SPECIFICATIONS

(SUBJECT TO CHANGE WITHOUT NOTICE)

	22 FT. INBOARD RUNABOUT	22 FT. INBOARD-OUTBOARD
Length O. A. (Centerline)	22'-2"	22'-2"
Beam O. A.	7'-11"	7'-11"
Draft	2'-2"	2'-0"
Freeboard Forward	3'-4 1/2"	3'-4 1/2"
Freeboard Aft	2'-7 1/2"	2'-7 1/2"
Depth (Amidships, Floor to Rail)	2'-11"	2'-11"
Aft Cockpit Length	7'-6"	7'-6"
Shipping Weight (Approx.)	2750#	2550#
Hull, Clinker-built, Round Bottom Design; 5-Ply Fir Marine Plywood Throughout	3/8"	
Frames, Steam-bent White Oak Throughout	7/8" x 1"	
	Spaced 6" Centers	
Keel, Stem, Knees and all other Structural Parts	White Oak	
All Jointer Work Solid Philippine Mahogany and Philippine Mahogany Plywood.		
Fastenings	Salt Water Fastened Throughout	
Fuel Capacity, Gallons	Runabout—38, Inboard-Outboard—27	
Engine Options (INBOARD RUNABOUT)	V-8's up to 195 HP	
Engine Options (INBOARD-OUTBOARD)	up to 160 HP	
Speeds (Attained over an accurately measured course under favorable conditions and are not guaranteed.)	to 35 MPH	

SPECIFICATIONS

(SUBJECT TO CHANGE WITHOUT NOTICE)

	19 FT. INBOARD RUNABOUT	19 FT. INBOARD- OUTBOARD
Length O. A. (Centerline)	19'-5½"	19'-5½"
Beam O. A.	7'-3¼"	7'-3¼"
Draft	2'-0"	1'-10"
Freeboard Forward	3'-0"	3'-0"
Freeboard Aft	2'-5"	2'-5"
Depth (Amidships, Floor to Rail)	2'-7"	2'-7"
Aft Cockpit Length	7'-2½"	7'-2½"
Shipping Weight (Approx.)	2500 lbs.	2300 lbs.
Hull, Clinker-built, Round Bottom Design; 5-Ply Fir Marine Plywood Throughout	¾"	
Frames, Steam-bent White Oak Through- out	7/8" x 1" Spaced 6" Centers	
Keel, Stem, Knees, and all other struc- tural Parts	White Oak	
All Joiner Work Solid Philippine Mahog- any and Philippine Mahogany Plywood.		
Fastenings	Salt Water Fastened Throughout	
Fuel Capacity, Gallons....	35	24
Engine Options	V-8's up to 165 HP	up to 120 HP
Speeds (Attained over an accurately measured course under favorable conditions and are not guaranteed)	to 35 MPH	



THE POPULAR LYMAN 19'

They're medium-sized boats in our line, at moderate prices, but they have a full measure of Lyman quality, full lapstrake construction, they handle beautifully and are very economical in operation. They're great boats to take with you anywhere to enjoy waterskiing or fishing because they handle easily on a trailer. Features are ventilating wood windshields, locking bulkhead compartment under forward deck. Storage space under forward deck and behind stern seats is standard. Optional equipment includes toilet under forward deck and folding top. Available with either inboard or inboard-outdrive.



STANDARD EQUIPMENT

(SUBJECT TO CHANGE WITHOUT NOTICE)

Bilge Drain Plug • Bow Chocks • Compartment Lights • Dock Lines • Electric Signal Horn • Fore and Aft Lifting Rings • Forward Deck Bulkheaded Compartment • Navigation Lights • Pennant Pole and Lyman Pennant • Stainless Steel Gunwale and Bilge Bumper Banding • Stem Band • Shipping Cradle • Step Pads • Stern Pole • Storage Lockers • Transom Scuff Banding • Ventilating Windshield with Side-shields, Safety Glass • Ventilation System.



16' and 18' Inboard-Outboard or Outboard Drive

Lyman's enviable position as a quality boat builder was built largely by the high-performance records chalked up by their 16' and 18' and smaller models, many of which are still going strong after 20 years of hard use. Standard equipment includes mahogany decks, varnished interiors, back-to-back seats, ample storage space and ventilating windshields with side shields. They trailer easily and have a special appeal to fishermen and water skiers. Both the 16's and 18's are dry-riding and exceptionally seaworthy . . . performance proved over many thousands of boats. See the price list for optional equipment, you can buy them as basic boats or make them as deluxe as you wish.



All Lyman boats are hand-made from stem to stern of the finest materials available . . . clinker built, full lapstrake construction in Lyman's own special hull design, stable, dry-riding and seaworthy in any weather. They were born (93 years ago) and bred on Lake Erie, one of the roughest of our inland seas. It has often been said that a boat that can take it in Lake Erie can take anything . . . Lyman has been proving that for a long time.

SPECIFICATIONS

(SUBJECT TO CHANGE WITHOUT NOTICE)

	16 FT. INBOARD- OUTBOARD	18 FT. INBOARD- OUTBOARD
Length O. A. (Centerline)	16'-2½"	18'-2"
Beam O. A.	6'-2¾"	7'-1"
Draft	1'-8"	1'-7½"
Freeboard Forward	2'-5½"	2'-8½"
Freeboard Aft	1'-10"	2'-1"
Depth (Amidships, Floor to Rail)	2'-2"	2'-7½"
Shipping Weight (Approx.)	1005 lbs.	1205 lbs.
Hull, Clinker-built, Round Bottom Design; 5-Ply Fir Marine Plywood Throughout	¾"	
Frames, Steam-bent White Oak Throughout	¾" x 7/8" Spaced 6" Centers	
Keel, Stem, Knees, and other Structural Parts	White Oak	
All Jointer Work Solid Philippine Mahogany and Philippine Mahogany Plywood.		
Fastenings	Salt-Water Fastened Throughout	
Fuel Capacity, Gallons	18	18
Engine	up to 60 HP	up to 80 HP

Speeds (Attained over an accurately measured course under favorable conditions and are not guaranteed.) to 30 MPH

STANDARD EQUIPMENT

(SUBJECT TO CHANGE WITHOUT NOTICE)

Bilge Drain Plug* • Bow Chocks • Copper Bottom Paint* • Dock Lines • Electrical Signal Horn* • Fore and Aft Lifting Rings* • Forward Deck Bulk-headed Compartment • Navigation Lights • Pennant Pole and Lyman Pennant • Seat Storage Compartments • Shipping Cradle • Stem Band • Stern Deck Cleats • Stern Pole • Towing Eye • Ventilating Mahogany Windshield with Sideshields, Safety Glass • Ventilation System. • *I/O only.

SPECIFICATIONS

(SUBJECT TO CHANGE WITHOUT NOTICE)

	16 FT. OUTBOARD	18 FT. OUTBOARD
Length (Through Centerline)....	16'-2½"	18'-2"
Length (Around Gunwale)	17'-3½"	19'-5½"
Beam (Overall)	74¾"	85"
Depth (Amidships)	26"	31½"
Transom Width (maximum)	68"	78½"
Transom Height	20"	20"
Deck Length	65"	77"
Aft Cockpit Length	55"	72"
Motor Recommendation	up to 75 HP	up to 90 HP
Average Weight	655 lbs.	855 lbs.
Shipping Weight (Approx.)	765 lbs.	965 lbs.
Hull, Clinker-built, Round Bottom Design; 5-Ply Fir Marine Plywood Throughout	¾"	
Frames, Steam-bent Throughout	White Oak	
Keel, Stem, Knees, and other Structural Parts	White Oak	
All Jointer Work Solid Philippine Mahogany and Philippine Mahogany Plywood.		
Fastenings	Salt-Water Fastened Throughout	
Fuel Capacity, Gallons (Optional)	18	18



QUALITY TELLS

Many boats are fairly comfortable if the water is smooth but the real measure of quality, design and construction comes through when the water is rough as it is bound to get at times. That's when Lyman performance stands out from all the rest.

Remember, there are no springs or shock absorbers on boats and water is pretty solid stuff. When it's choppy or you cut across a wake, the shock is transmitted in a greater or lesser degree in direct ratio to the hull design. Lyman boats have long been famous for their easy going and dry ride in all kinds of water, at the same time retaining a high degree of stability . . . you can find out for yourself by taking comparative trial rides.



Lyman
BOAT WORKS
1615 FIRST STREET
SANDUSKY, OHIO 44870