


MAGAZINE
Tollycraft





Tollycraft



Tollycraft Introduces Bold New Fleet in '72

Here comes the bold new ones! Reflecting the proud, free spirit of the seventies, Tollycraft's 1972 line of luxury cruisers is bolder and better than ever.

The newest Tolly fleet blends traditional Tollycraft quality and excellence in design with a distinctively bold new look.

Bright red-white-and-blue striping highlights Tollycraft's new look for 1972.

The new stripes accent hullsides, the front of the flying bridge and the aft cockpit. In many models, the red-white-and-blue theme has been extended throughout the boat, decorator-blended into interior carpeting, drapes, and upholstery.

The new striping adds a flair to the familiar turquoise trim long identified with Tollycraft, and still a prominent mark of distinction on the new fleet.

A choice of seven different lengths and eleven different models, including an all-new 30-foot Express cruiser, now awaits the family looking for elegance and superb performance afloat. For the first time, all cruisers are available with a diesel power option.

Bold new queen of the new Tollycraft fleet is the luxurious 45 foot motor yacht, introduced mid-year and already casting an exciting new profile on waters of the Pacific coast.

An elegant 40-foot tri-cabin, 34 Sedan and Express, 30 double cabin and 30 Express, 28 Express and Sportfisher, 24 Express and Sportfisher, and the spacious Tollyhome 36 houseboat round out the luxury fleet.

The complete line of Tollycraft cruisers may be seen now at key dealers in major boating areas coast to coast.



Luxury, Liveability Highlight New 45' Flagship

With a new big-ship profile and a truly elegant quad-cabin interior, Tollycraft's 45 Motor Yacht is second to none in the industry for luxury and liveability.

Cruising families will appreciate the convenient layout. Total privacy is provided by a spacious master stateroom aft, with private head, vanity and clothes closet, and two separate staterooms forward with head and shower. In between, a large main salon with galley and inside pilot station is elegantly finished in teak accented by color-keyed plush carpeting and soft-tone upholstery.

The spacious all-electric galley contains a 3-burner range, stainless steel double sink, 15 cubic foot refrigerator and deep-freeze combination, pastry board, and lots of cupboard and counter space.

Little things, like hand-carved teak door handles imported from Denmark,

add touches of elegance throughout.

The new cruiser glides along on the largest hand-laminated solid fiberglass hull ever produced for a Tolly boat.

"It's the finest riding hull I've ever experienced!" according to veteran boater Jim Barry, owner of Marina Del Rey in Southern California.

After a test run in a 45 knot wind, one woman's only comment was, "I thought you said it would be rough out there."

Owners have called the new flagship "the greatest Tolly ever built" . . . "most beautiful" . . . "an exceptional boat." And, who can blame them for being proud? The end result of nearly 40 years of unexcelled craftsmanship, Tollycraft's bold new queen of the fleet offers discriminating boaters the ultimate in yachting pleasure.

Total Luxury Greet Boaters In Beautiful New 40 Tri-Cabin



The exciting Tollycraft 40 Tri-Cabin is a gracious hostess; you feel like royalty the instant you step aboard. And with good reason. From its magnificent main salon to roomy forward and aft staterooms with private heads, the 40 is a total luxury cruiser designed in the grand manner.

Rich African mahogany and color-coordinated deep-pile shag carpeting and upholstery make the interior come alive. Three elegant cabins are equipped throughout with the ultimate in yachting conveniences.



A 9.5 cubic foot refrigerator, 3-burner electric range and oven, stainless steel sink and formica countertops are standard in the gourmet galley, along with many small thoughtful details, like a pastry board and extra-large cupboard space.

The cruiser features not one, but two heads, furnished with porcelain sinks, vanity mirrors, electric heads, and a shower aft. A 150-gallon hot and cold fresh water system is standard.



The elegant 40 Tri-Cabin sleeps six in complete comfort.

Topping off the cruiser's thoughtful appointments, the command bridge and inside helmsman station both feature full instrumentation.

Tollycraft luxury is evident again in the fiberglass teak decks and solid teak handrails and toerails. The traditional Tolly quality is seen in the hand-laminated solid fiberglass hull, the strongest anywhere.

Overall, a luxurious cruiser to please the most discriminating boater.



Seeing is believing...

A 38' Tri-Cabin That Trailers!

A few thousand miles of land is no obstacle for John Dalgarno of Casper, Wyoming, when he wants to go ocean cruising in his Yellowstone Lake-based 38 foot Tollycraft.

Riding a four-axle, custom-built low-boy trailer, his big Tolly has logged over 25,000 land miles traveling the nation's highways on its way to Dalgarno's favorite boating areas.

John has rebuilt a Ford cab-over truck to tow the giant rig, which claims the title of "world's largest privately owned pleasure boat trailer." Traveling dawn until dark, it covers about 400 miles a day, and never ceases to amaze people along the way.

Many of the areas Dalgarno visits have no facilities to lift a boat this size in and out of the water. Accepting the challenge, John designed his huge trailer to launch it.

And, as if 38 feet of boat isn't enough to tow, he also brings along a 17-foot Tollycraft ski boat for beach exploration and water skiing.

What gave him the confidence to try trailering this big a boat in the first place?

"I was able to watch the construction of the Tollycraft at the factory in Kelso, Washington," Dalgarno said, "and was satisfied that this was the boat for me . . . I was sure it could be trailered safely many miles."

Cost of transporting the boat always brings a rash of inquiries. Dalgarno reports the basic expenses involved are gasoline, food and lodging, and so far, these haven't proven too costly.

The biggest exception to this occurred during a recent trip to Baja, Lower California, where his party was detained four days while securing customs clearance for the boat. To enter Mexico, he had to post \$1,000 cash to guarantee the boat would spend no more than 30 days in that country. Although the 30-day deadline was met, the money was never refunded.

Despite his troubles getting there, he still figures it was worth it.

"Our party spent a lovely month cruising the Mexican waters and I was surely impressed again that I had made the right choice of boats.

Dalgarno is delighted with his 38 foot Tollycraft because ". . . it is structurally sound, requires minimum maintenance, is designed for stress and safety, dependability in all weather, versatility and portability."

The Tollycraft Corporation has not yet followed Dalgarno's lead in claiming their 38-footer is designed for portability. Dalgarno, meanwhile is ready to move on to bigger and better things.

"I am considering the new 45 foot Tollycraft, as I am convinced it will be as good or better than the boat I now have."

We're waiting to see the trailer he builds for THAT one!



Full-Height Windows In Unique 34 Sedan



With crowd-pleasing elbow room outside and 6 feet 4 inches of headroom inside, Tollycraft's unique 34 Sedan is like a floating penthouse apartment. Here at last is an exciting new cruiser that really invites a person to enjoy the view, with full-height windows that let him see out whether standing or sitting.

An elegant atmosphere and family-size livability permeates every inch of the boat, down to the smallest hand-crafted detail.

The double-cabin layout features a decorator-harmonized interior which sleeps six. And just off the main salon, a spacious L-shaped galley stands ready for the most demanding gourmet, fully equipped with refrigerator, 3-burner stove and oven, generously large cupboards.

The head, with easy-to-clean fiberglass shower, is finished with vinyl decorator wall paper. Both galley and head are serviced with a hot and cold water system.

Complete with full instrumentation at the command bridge and special inside helmsman station, the Tollycraft 34 Sedan is the ideal boat for family cruising or fishing, no matter how long the journey.



Woodcraft by Master Craftsmen Still Tolly's Mark of Excellence



Tollycraft Corporation has seen considerable expansion indeed since those early furniture manufacturing days when R. M. "Tolly" Tollefson used his professional skills as a master craftsman to build an occasional boat by hand.

And yet, although ultra-modern assembly techniques now utilized in construction, master craftsmen at Tollycraft still take time to hand-fit and hand-finish each cabin interior to maintain the Tollycraft tradition of unexcelled quality.

Tollycraft's quality woodcrafting formula is a combination of personalized fitting and careful selection of the finest materials.

Hand-carved teak door handles on the new 45, for example, are imported all the way from Denmark. All cabin interiors are finished with select grade imported African mahogany or high-pressure laminates. Where other woods are used, Tollycraft chooses only the highest grades available.

Each wood part is cut to exact measurements from a master pattern. Precision joiner work provides visual proof of the skill of the Tollycraft craftsmen. Close inspection of the cabin interiors disclose the unparalleled workmanship on which Tollycraft's reputation is built.



Bright Interiors, Plush Living Are Hallmarks Of 34 Express

Plush accommodations and convenient styling designed to delight a woman's discriminating taste are the hallmarks of Tollycraft's 34 Express.

A bright new interior design makes this double-cabin cruiser live like a house . . . lavishly spacious, and quality-crafted throughout. Color-coordinated nylon carpeting and upholstery complement the decorator-veined interior.

The spacious salon is ideal for entertaining, and the galley is big enough to delight any gourmet. The private head features a porcelain sink and fiber-glass shower with hot and cold water system.

When it's time to turn in, this royal beauty sleeps six in style. Guests enjoy the privacy of double cabin quarters.

Truly a luxury yacht in the Tollycraft tradition, the 34 Express offers almost everything in boating style and convenience. You have to ride in it to believe it.



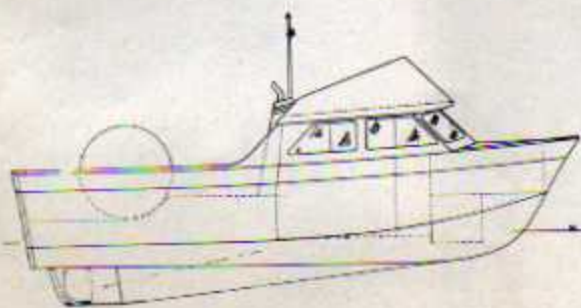
NEW 30' GILLNETTER UNDERWAY

A 30 foot sternpicker gillnet fishing boat expected to be available by late fall, 1971, is currently under development at the Tollycraft plant.

The new boat marks Tollycraft's first expansion into the commercial fish boat market to meet an increasing demand from Columbia River, Puget Sound and Alaskan fishermen for good fiberglass fishing vessels.

Tollycraft conventional 30 foot hand-laminated solid fiberglass hull, allowing a deep keel, will be modified to meet the specialized requirements of these fishermen including factory equipped, custom-installed hydraulic equipment and nets. The design resulted from many months of interviews with hundreds of commercial fishermen in the Northwest to engineer a model ideally suited to their needs.

Gillnetters will find the boat roomy and a comfortable place to work. The galley, head, 2 berth sleeping quarters, and inside and outside controls are standard equipment. Major options will include a command bridge, hydraulic equipment, nets and the fisherman's choice of gas-fueled or diesel engines.



The Feminine Touch



A Tollycraft is a man's boat . . . built with the **woman** in mind. The same sleek design that makes for man-pleasing performance also shines with a stylish beauty to please the most discriminating feminine eye.

Inside, Tollycraft blends the ultimate in convenience with an atmosphere of elegance.

Well-designed galleys take the "roughing it" out of cooking, with thoughtful touches like plastic storage drawers with rounded corners that are easy to clean, slide effortlessly . . . pastry boards . . . one-burner, two-burner, and three-burner ranges with ovens that make cooking a pleasure . . . refrigerators . . . hot and cold water . . . aisles with plenty of elbow room . . . and attractive dinettes with comfortable seating. A woman is never a "galley slave" aboard a Tollycraft.

Given a choice of color coordinates, she'll love putting her individual personality into each stunningly beautiful cabin and stateroom. And she'll be proud to show guests the luxurious decor.

Deep pile nylon carpeting is decorator harmonized with French-pleated draperies and warm or cool tone upholstery. The walls are rich with mahogany paneling, and big-view glass windows slide easily to bring in the brisk smell of clean fresh air.

Sleeping quarters in every Tolly are considerably arranged for maximum comfort, privacy and versatility.

Countless other features show the planning and care from the woman's point of view that goes into every Tollycraft. Storage space abounds. Non-skid decks and safety railings encompass the boat. Smooth steering control and complete instrumentation lets any woman handle the biggest cruiser with ease and confidence.

As many luxuries as can be packed aboard are found on all models. And each thoughtful detail is quality crafted to make every moment of a woman's life aboard a Tollycraft cruiser carefree and delightfully elegant.

HIDDEN FEATURES

More Than Meets the Eye

In a Tollycraft, quality craftsmanship goes deeper than the sumptuously finished cabin interiors, hand-crafted woodwork, sleek, stylish superstructures and clean sweeping hulls.

Those touring the Tollycraft plant are always amazed at the precision workmanship, attentive concern and fine materials used in construction . . . even in areas of the boat that will never be seen. Small but important things like bedding the anodized aluminum window frames, both top and bottom, in heavy foam sealant tape before bolting them into position; using silicone bronze screws throughout; coating deck fitting bolts with marine sealants to prevent leaks; plug-in wiring circuits to minimize electrical problems, and hand-fitting every part in place are carried out in every cruiser.

Visitors are impressed that every Tollycraft has such built-in hidden features as molded fiberglass engine stringers, longitudinals and ventilation ducts, permanently and painstakingly bonded to the hull. Extra strength and rigidity is added to decks and walking areas with the installation of fiberglass-encased Balsa Core layers.

In the 36 foot Tollyhome assembly area visitors discover such unseen advantages as double-wall construction with blown-in foam insulation.

Among the many other features not readily visible in the finished product are fiberglass marine mufflers and exhaust tubing, heavy duty spun fiberglass shaft-log tubing in every inboard, painted, and finished engine rooms and chrome-plated brass bolts to fasten down deck cleats.

After a tour and test ride, boaters agree it takes a 45-minute personal tour of the plant to see all the quality craftsmanship that goes into a Tollycraft . . . but it only takes a short ride to feel it.



FANTASTIC 30 DOUBLE CABIN PACKS 'EM IN!



Nowhere else will boaters find a cruiser that packs so much topside fun, so much privacy and comfort, or sleeps so many people in just thirty feet as this fantastic Tollycraft double-cabin. And coupled with its unbelievably functional use of space, the Tollycraft 30 offers a sleek look of solid luxury.

The hand-crafted African mahogany interior with decorator-harmonized shag carpeting features an extra-roomy lounge with sliding door privacy. The galley is attractively equipped with stainless steel sink, Formica countertops, ice refrigerator and three-burner propane stove with an oven. The dinette is not only attractive . . . it accommodates six!

Added touches include an enclosed head with vanity and a shower serviced by fresh hot and cold water. Best of all, the boat sleeps eight in total comfort. And that's just the interior!

Topside, there is room for the whole crowd to stretch out in the sun and really enjoy the fun of boating. With full instrumentation and two freshwater cooled 225 HP V-drive Chryslers supplying the power, the Tollycraft 30 leaves the world in its wake.



TOLLY ON PATROL

Tollycraft engineers are developing a high speed 28 foot custom runabout for Sheriff's patrol duty on the Detroit River.

With Tollycraft's popular 28 foot hand-laminated solid fiberglass hull adapted to police work, the craft will feature a cutout in the transom for easy access to the water line. Powered by twin Chrysler 225 HP V-8's, the boat is expected to reach speeds up to 40 m.p.h. easily.

Other special modifications include a metal bow ice breaker to permit the boat to operate when freezing Michigan weather coats the river with ice, and a convertible canopy to protect officers from the sun during hot summer months.

Designed along the lines of a huge ski boat, the forward bow section will be decked over and equipped with a special skiff windshield to keep out the wind and spray. The open cockpit will extend 32 inches below the deckline.

The boat is a pilot model, similar to another 28 foot Tollycraft already in use by the California State Department of Fisheries at San Diego.

Tollycraft also has a 20-foot patrol boat cruising the waters of Lake Oswego, Oregon. It was built for the Clackamas County Sheriff three years ago, and already has over 4000 hours logged.

Boy Scouts "Spirited" To Campsite

Thanks to Tollycraft, the Boy Scouts of Western Washington now travel from Duck Bay across to their summer camp on Spirit Lake, Washington, in a specially designed 28 foot transport cruiser.

Built by volunteer labor, the craft was delivered earlier this summer. It provides, aside from hiking trails, the Scouts' only access to the camp, which is situated about 1½ miles from the nearest road. The boat is an open-hulled 28 foot runabout powered by an in-board-outboard engine. In constant use, it hauls 180 to 200 scouts to and from camp weekly, with a trip capacity of 30 boys and equipment.

Called the "White Eagle of Spirit Lake," the craft was a much needed replacement for an old-timer donated by Bumble Bee many years ago. Tollycraft has made other contributions to the Scout program: three years ago donating a 17-foot inboard-outboard, and last year donating a mold from which the Scouts can make their own fiberglass canoes.

None Better Built For Performance

Tollycraft boats are built to give the high performance, low cost maintenance and life-long service every boater should expect when making an investment in boating pleasure.

Designed by marine architect Ed Monk and R. M. Tollefson, Tollycraft's famous CONOLIFT hull is the proven answer to producing a boat with excellent speed, perfect handling in any kind of water, and a soft ride unequalled by any other manufacturer. The CONOLIFT secret lies in the modified deep-V design. Carrying the chine parallel to the waterline, it lifts the boat bodily out of the water. The result is less noise and slapping, greater buoyancy and a smooth, level ride.

Constructed of hand-laminated solid fiberglass, Tollycraft hulls are stronger, more impervious to leaks and marine borers, will not absorb water and are economical to maintain.





24 Express is Family Pleaser, Top Performer

A great introduction to the fashionable world of thoroughbred boating, the sporty 24 Express is a no-nonsense performer with extravagant appointments.

Small enough to trailer easily across the country, yet roomy enough to sleep four comfortably, it's certain to delight family or friends.

The bright honey teak interior with decorator harmonized carpeting and upholstery features plenty of storage and cupboard space, in addition to the fresh water system and fully enclosed head with smoked glass window.

As with all Tollycrafts, construction is of the highest quality anywhere. Decks, cabin and hardtop are individually molded of one-piece fiberglass. The hull is hand-laminated of strong, solid fiberglass for a smooth ride in the roughest waters. Plenty of pep, too. A ride in the Tollycraft 24 Express, powered by a 165 or 225 horsepower OMC stern drive, is an unforgettable thrill.

Marina Del Rey Leader In Sales



Southern California's Marina Del Rey is a complete boat show in itself, boasting a half million dollar inventory that includes every model in the Tollycraft line. Currently the nation's leading Tollycraft dealership, Marina Del Rey showrooms cover a 15,000 square foot area.

Love of boats and boating led Edward "Jim" Barry from the chemical business into Southern California's popular Marina Del Rey operation. Applying sound business techniques to the marketing of boats, the marina has enjoyed continued growth since Jim's first year of operation.

Tollycraft's new 45 foot motor yacht has proven to be a popular boat in Southern California boating circles, according to Barry. Three of the super-luxurious cruisers were sold by Marina Del Rey in the first three months after the flagship was added to the line, and more are on the way.

"We're going to stagger the factory when they see how many new orders we've received for the 45," a smiling Jim said recently.

And his customers keep coming back. Jim has received many complimentary letters telling him, "Your Tollycraft corporation is the best I've ever dealt with" . . . "I couldn't be more delighted with my new Tolly" . . . "You can use me as a reference."

Two things, Tollycraft quality and Jim Barry's personal philosophy, account for the success of Marina Del Rey. Take it from Jim.

"Treat everyone with respect . . . greet them with a smile . . . and you'll get it back tenfold."





The Tollyhome 36 cruiser, with all the modern convenience of the finest custom-built home and the romance of the seven seas, is unquestionably the finest houseboat afloat.

Extravagantly elegant, it's carpeted throughout in rich, restful colors artfully harmonized with the luxurious decor, complete with honey-teak paneling and full-length draperies.

The cramped feeling so often found in small boats is noticeably absent in the Tollyhome. An abundance of big windows invites the outdoors in, and a remarkable interior design makes for the ultimate in living, lounging and entertaining.

Luxurious New 36 Tollyhome Finest Afloat

A spacious forward lounge, a private aft stateroom with double bed, and a complete modern kitchen and dining area highlight the Tollyhome 36. The skipper's wife will find all the convenience of home with a 3-burner propane stove and oven, 9.5 cubic foot refriger-

ator, stainless steel sink and formica countertops. There's even a pastry board!

Adjacent to the master stateroom is a beautiful bathroom, complete with porcelain sink, medicine cabinet, vanity mirror and easy-to-clean fiberglass shower. A hot and cold water system is standard.

The entire house is foam-insulated to retain desired temperature, absorb sound and sleep six in real at-home comfort. Tollycraft's exclusive hand-laminated solid fiberglass hull is designed for smooth riding in rough water. Step aboard, and put the world at your doorstep!



TOLLY'S FIBERGLASS HULLS LEAD THE INDUSTRY

One of the strongest, fastest, softest riding hulls in the pleasure industry is that provided at Kelso, Washington by Tollycraft's fiberglass craftsmen.

Using mat and roving and utilizing the hand-lay-up process of lamination, solid fiberglass hulls of unexcelled quality are turned out from precision molds. All gel-coats are molded-in during manufacture, providing lasting color and trim without fading or need for maintenance. Every

fiberglass part is manufactured with high-strength resins.

One-piece molded fiberglass decks, cockpits, and superstructures are perfect in every detail to insure structural uniformity, strength, and beauty. Fiberglass-encased Balsa-Core layers add strength and rigidity to all decks and walking areas.

Because Tollycraft craftsmen give critical attention to even the smallest construction detail, "Tolly" fiberglass provides greater economy for a lifetime of boating enjoyment.



30 EXPRESS

Exciting Newcomer To Fleet

Tollycraft's all-new 30 Express cruiser is attracting considerable attention among the boating fraternity across the United States—a beautiful new addition to the Tollycraft fleet.

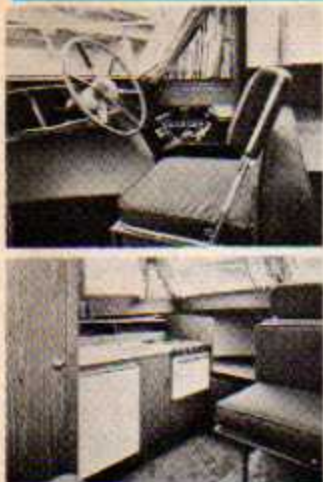
The new cruiser features a complete new design, using the popular and proven 30 hull of its sister ship, the 30 Double Cabin. It has a unique new cabin design which places the accent on sociability and family comfort.

The new design features such built-in feminine eye-pleasers as a fiberglass shower, spacious and well-equipped galley, and an innovative "U" shaped dinette. A large settee across from the dinette combines to form a spacious lounge area for greater fun and enjoyment.

Like its sister, the new 30 Express is a big-sleeper . . . the settee and dinette both convert to double bunks and altogether there is comfortable sleeping room for six.

Drop by and see this luxurious new 30 Express cruiser now on display at the Tollycraft dealers in your area.





FISHING AT ITS FINEST

Fishing at its finest can be found in the 28 Sportfisher. This boat is a classic Tollycraft in every hand-crafted detail, with plenty of elbow room on deck for the fishermen and comfortable cabin space below.

The 28 is suitable for entertaining as well as fishing, with an elegant eye-pleasing interior, including a bold new red, white and blue color scheme. The galley is well-equipped, with ice box, 3-burner propane stove and oven and a pressure fresh water system. With convertible dinette and spacious forward bunk, the Sportfisher sleeps four.

Tollycraft tops off the boat with an extra-large cockpit and command bridge for cruising or fishing convenience. No question about it . . . whether boating enthusiasts are after big fish or big times, they'll catch both in this salty Sportfisher.



Sleek Profile . . . Slick Comfort

Tollycraft's striking solution to luxury living-entertainment in a medium-size cruiser, the 28 Express casts a sleek, eye-catching profile as it zips effortlessly through the waves.

Sturdy construction typical of every Tolly is evident in the one-piece molded fiberglass decks, cabin, and hardtop, as well as the carefully hand-laminated solid fiberglass hull.

Women especially appreciate the honey-teak interior with color-coordinated deep-pile nylon shag carpeting and upholstery.

A family boat, the 28 Express sleeps four comfortably and is thoughtfully styled with enlarged storage and cupboard areas and a well-equipped galley. The fresh water system and fully enclosed head with smoked-glass window are standard.

Complete with heavy-duty rack-and-pinion steering, full instrumentation, the big twin or single 225 horsepower Chrysler power, the Tollycraft 28 Express provides an exciting ride for both the skipper and his guests.

Meet Bruce



Bruce O. Hallberg

EXECUTIVE VICE PRESIDENT and General Manager, Bruce O. Hallberg has been on the Tollycraft management team since 1959, but his keen interest in boating dates back to his college days.

It all started when he built a small boat in his spare time while pursuing mechanical engineering studies at the University of Illinois.

Bruce left his native Chicago after graduation and moved west to accept an engineering position with the giant Weyerhaeuser Company in Longview, Washington. He soon married a local girl, bought a Tollycraft cruiser and joined the Longview Yacht Club.

It was there that Bruce became good friends with R. M. "Tolly" Tollefson. The friendship expanded, and in a few years, Bruce left Weyerhaeuser to become plant superintendent at Tollycraft.

Now general manager of the Tollycraft Corporation, Bruce oversees production of the fleet and collaborates on new development. Drawing on engineering and boating backgrounds, he assists in mechanical, electrical and structural design.

Bruce was the man responsible for engineering Tollycraft's outstanding assembly procedures that are unique to the industry and have drawn many plaudits from the experts.

Bruce and his wife have three children and he is very active in Boy Scouts. Those who know him well tell you his enthusiasm is boundless for boating and the Tollycraft fleet.

Tollycraft's 'Inside-Out' Techniques Result In Unique Assembly Process

A unique process of assembly makes Tollycraft's production techniques unique in the industry . . . while most manufacturers work from the bottom up, Tollycraft works from the inside out, pre-assembling each boat in three basic units.

Woodcraft specialists first construct the entire cabin unit and interior furnishings from precision-cut patterns. Unlike other builders who squeeze in cabin appointments after everything else is finished, Tollycraft builds-in the refrigerator, stove, toilets, sinks, plumbing and wiring at the same time it assembles the woodwork. The result is a strong, precision-fit cabin unit with greater structural uniformity.

During cabin pre-assembly, the deck section is rigged in the assembly plant. The cabin top, windows and hardtop or fly bridge are installed to make a second cohesive unit.

Meanwhile, hull assembly experts are installing the engine, propeller shafts, rudder, and other mechanical and electrical components into the hull form. The entire hull is one-piece molded fiberglass, colored in the mold to eliminate any chance of peeling.

When all three units are completely finished and thoroughly inspected, the entire deck unit is lowered onto the cabin assembly and fastened together.

These units in turn are installed into the hull, where final bonding takes place.

Using this method of 3-part pre-assembly, workers are able to provide undivided attention to the finishing of each unit.

Since they work at floor level, craftsmen are able to work from all sides of the project, permitting better installation of windows, hardware, galley equipment, as well as electrical and plumbing.

All parts are kept in the open for easy inspection throughout production. When the boat finally leaves the plant, every detail tells Tollycraft's lead quality craftsmanship story.



A Sweet 'n Sassy 24' Sport Fisher

No matter where favorite fishing grounds are, Tollycraft's sassy Sportfisher 24 gets you there in a hurry. It trailers effortlessly to lake, river or sea—and it's roomy enough to take friends for a day's outing, or accommodate a couple on extended cruises.

Though the Sportfisher is extremely functional, it retains a bold look of beauty. The honey-teak interior is accented by richly-colored nylon carpeting and upholstery. A fully-enclosed head with smoke-glass window, enlarged storage and cupboard areas, and fresh water system are standard.

Instrumentation includes tach, ammeter, fuel gauge, oil and water warning lights. Top performance is achieved with a 115 or 225 hp OMC stern drive, or with the new optional diesel stern drive. And the ride is smooth all the way on Tollycraft's famous hand-laminated solid fiberglass CONOLIFT hull. Every inch a smartly-styled sea-rover, Tollycraft's 24 Sportfisher is a boat to be proud of.

Tollycraft has the know how

Tollycraft's management and foremen represent 190 years of boatbuilding experience, and each part of a Tollycraft boat is engineered and constructed with the precision of fine furniture. Our engineering department, working with noted naval architect, Ed Monk, has made Tollycraft a leader in the fast-moving boat industry.

Tollycraft has excellence in design

Clean, uncluttered yacht styling, traditional yet with a contemporary flair, is used throughout the Tollycraft line. This style never "out-dates" itself. Maximum use is made of all space, allowing more storage and more comfortable than comparable sized boats.

Tollycraft has the craftsmanship

Every employee takes personal pride in his job and is indeed a highly skilled specialist. Only the best construction methods known to the industry are used, and rigid quality control is demanded at every stage of production.

Tollycraft has elegant interiors

Tollycraft interiors are decorator harmonized throughout, with top quality nylon carpeting, luxurious upholstery and draperies, polyfoam mattresses and cushions, and African mahogany woodwork finished to a rich semi-gloss walnut. Tollycraft interiors are designed for maximum comfort and convenience, with particular attention paid to the many small details important to a woman. These include such things as pastry boards, easy sliding drawers with rounded corners for easy cleaning, functional and efficient galleys, ovens and storage, durable eye-appealing fabrics and tiling, and many more items that mark a Tollycraft superior.

Why Tollycraft Boats Are Better



Tollycraft dealers give service

Tollycrafts are sold only through experienced and established marine dealers with proper facilities for service by people who know boating and cruising. These men are well-known in their community and are ready and willing to assist each purchaser in the proper use of his new boat.

Tollycraft has best engines obtainable

Careful inspection of the Chrysler motor will reveal why it is superior to other makes: It is better engineered and executed; it has a clean and uncluttered appearance, with parts and service available everywhere; it has easy accessibility to spark plugs, generator, starter and pump; full cooling, oil and manifold, thermostatically controlled; plus a wide range of horsepower available for economical operation.

Tollycraft uses the OMC stern drive units because they are dependable plus high performers, with these outstanding features: 75-degree electric tilt; universal adaptability to all boats and horsepower ranges; outstanding warranty, parts and services available throughout the country; basic engine blocks manufactured by General Motors; electric power shift, smooth effortless shifting, and stabilized power cradle with no strain on transom.

Tollycrafts have higher re-sale value

Dealers report they consistently offer higher trades on Tollycraft boats because their basic value is greater and they are easier to sell. Tollycraft owners take better care of their boats, the performance is better, and Tollycraft boats do not go out of style quickly.

Tollycraft uses only the finest materials

Cabin interiors are finished with select grade African mahogany or high-pressure laminates, and where other woods are used, Tollycraft uses only the highest grade available. All fiberglass parts are made with high-strength resins. All hardware and accessories are selected from those considered the finest available. For lasting beauty only the highest quality paint and varnish is used, sealed and filled before application.

Diesels Optional For All Boats

Diesel fans will be happy to hear every new Tollycraft cruiser is available with optional diesel power.

Inboard diesel installations may be ordered for all models except the 24' Express and Sportfisher. A new 100 HP Chrysler-Nissan diesel stern drive is available for these 24 foot models only.

This marks the first time in Tollycraft history that a diesel engine option is available for every boat in the line. New smoother operating engines and increased interest in marine diesel power make this offering possible.



Superior Quality Fire Retardant Resins Optional

Superior U.S. Coast Guard and Navy-approved fire retardant resins are now an optional feature on all Tollycraft boats.

These resins have fire retardant properties superior to any fire retardant resins we know of now being used on pleasure boats.



R. M. Tollefson

Welcome Aboard!

The 1972 season will complete our second decade of building Tollycraft quality cruisers. A lot has happened in the past 19 years; constant improvement in products, design, performance, engineering and quality are evident. But the biggest changes in our history are being made this year.

Tollycraft is going bold and beautiful with a whole new look. We've taken the true-blue Tollys and rejuvenated them with a sleeker design, stronger construction, and a racy red-white-and-blue striping. Quality remains the very best, in the Tollycraft tradition, while our production techniques are constantly improving to give the most boat for the money.

But the single most valuable asset to both owners and dealers is the high trade and resale value of all Tollycraft boats. This situation exists because of the wide acceptance of Tollycraft superior craftsmanship by ardent and knowledgeable yachtsmen. It is one of the secrets of Tollycraft's remarkable success.

The Tollycraft fleet is growing all the time, and we'd like to grow with you. May we welcome you aboard?

TOLLYCRAFT CORPORATION
R. M. TOLLEFSON
President

the
bold
new
look

40 Years of Tollycraft

It all began nearly 40 years ago in Kelso, Washington, when R.M. (Tolly") Tollefson built his first boat — a 16-foot speedboat.

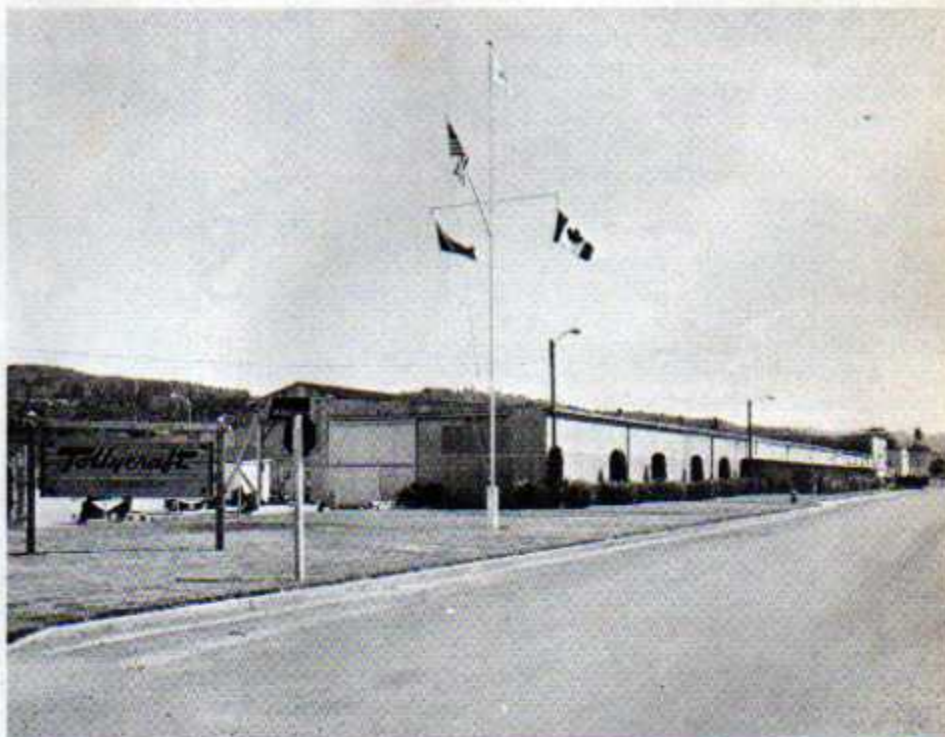
Tolly was a master cabinet maker, and the careful precision and minute attention to detail that characterized his fine furniture were soon to become the qualities to mark the Tollycraft fleet as the finest afloat.

Friends were so impressed with the workmanship and quality of Tolly's boat that they started ordering boats for themselves. Word of the "Tollycraft" quality spread up and down the Pacific Coast, and demand became so great that in 1952, Tolly shifted the en-

tire operation of his sash and door plant exclusively to boat-building and formed the Tollycraft Corporation.

Production began on a complete line of luxury cruisers and outboards, with hulls designed by renowned marine architect, Ed Monk. The distinctive Tollycraft design, styling and handcrafted workmanship eventually built the excellent reputation the company enjoys today throughout the boating industry.

Since formation, the plant at Kelso, Washington has been expanded continually to keep pace with sales. The plant and the Corporation has grown every year, and continues to grow as Tollycraft sales spread to new areas of the nation.



Wherever possible, boats are shown with standard equipment. However some boat models are shown with additional optional equipment. See your dealer for complete listings of standard equipment and options available. Specifications contained in this brochure are based on the latest product information available at the time of publication. The right is reserved to make changes at any time without notice in prices, color, materials, equipment, specifications and models. All boat weights listed are estimated shipping weights. Printed in U.S.A.